

A PAN-AFRICAN ONLINE COURSE

11 & 12 APR 2024 | 6 & 7 JUNE 2024 | 5 & 6 SEPTEMBER 2024



Living and leading in challenging times

Using Gestalt OD to manage self, inspire others, and impact systems

Are you bewildered or anxious faced with the uncertainty of our current times?

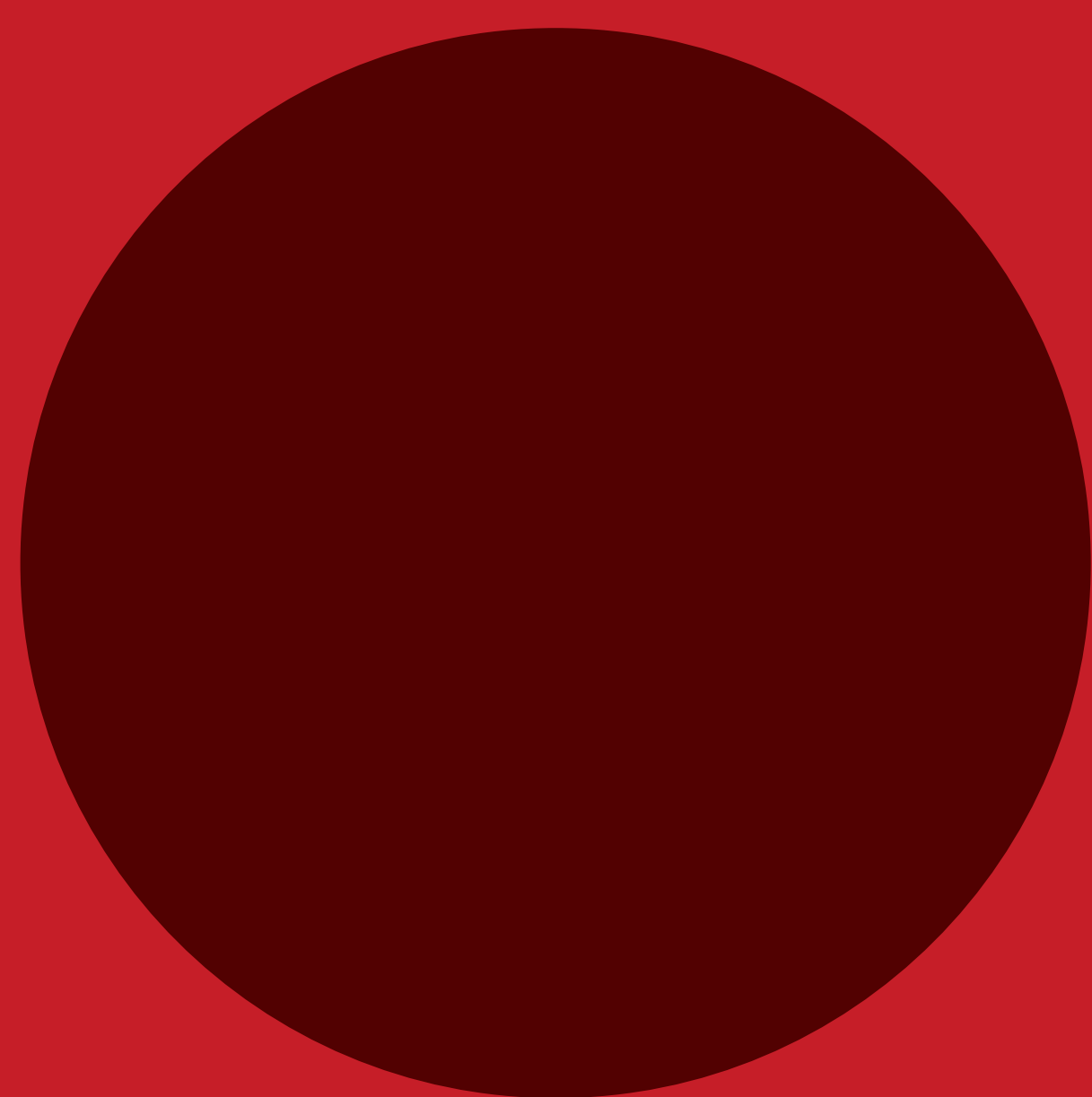
Do you find yourself seeking new tools to respond to the "new normal" brought about by the pandemic?

Do you want to expand your personal presence and improve your ability to understand, engage with, and influence others, including virtually?

Do you want more effective approaches for living, learning and leading?

Gestalt Africa is pleased to offer a series of courses to support executives and managers to move from states of reactivity, anxiety, low energy and morale, to experiencing self and others as resourceful, able to exercise agency and take appropriate empowered action that has impact.

This introductory course provides the foundation for a series of modular virtual courses that will be run in 2024.



Who should attend

This course is appropriate for anybody who works in or with organisations. It is designed to support leaders, managers, HR practitioners, facilitators, consultants, coaches, mentors and organisation development practitioners who wish to gain insight into themselves, and develop their ability to impact teams, organisations and clients.

What you will get out of the course

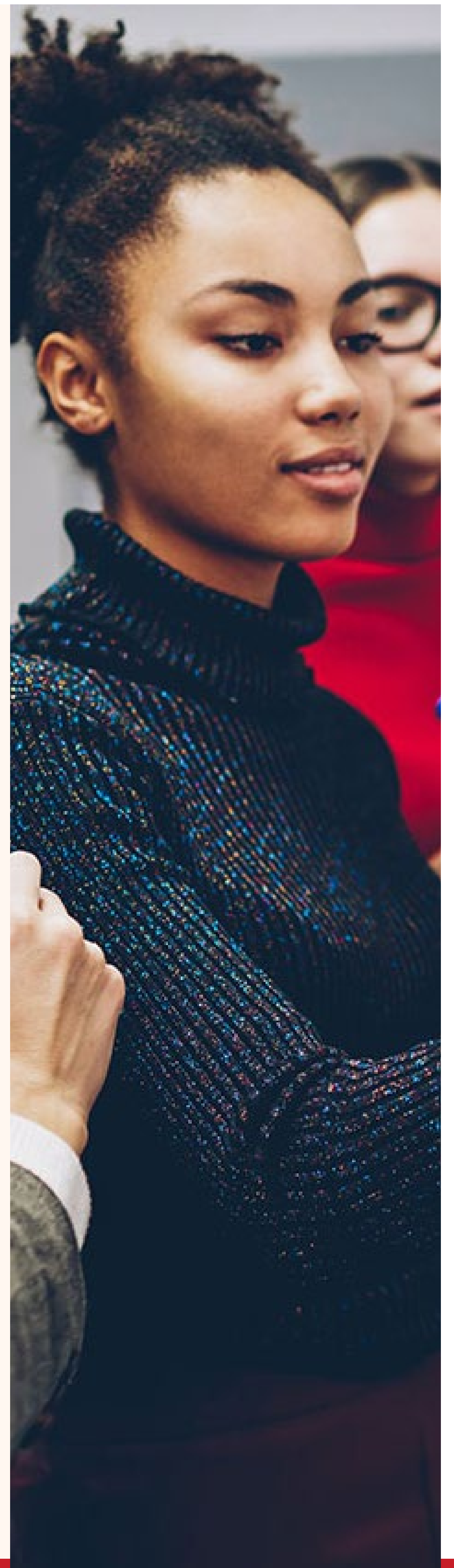
Our approach to learning and leadership development is experiential, caters to different learning styles and works with the dynamics of the group. During the course, you can expect to receive feedback and learn from your peers in a supportive, energising and fun way. The course will be run virtually using a blend of platforms and approaches.

You will walk away from this course with

- A frame for understanding yourself and others, and group dynamics, that is based in sound psychological research and practice, and is practical and applicable to your work situation.
- An understanding of the cornerstone theory and practice of Gestalt as applied to work and organisations: observing the phenomena of human experience, and intervening or supporting effectively.
- An ability to share your experience and awareness in a non-interpretive, non-judgemental way, thereby positively supporting others to learn and grow.
- Practical techniques of how to mobilize the energy of your colleagues, teams and clients, the key to effectively motivating others.
- An experience of using yourself, that translates into more impactful leadership, through improved personal presence, and the ability to influence those with whom you work.
- Personal insights and understanding that will energise you to venture into professional effectiveness and personal fulfilment.

BACKGROUND TO GESTALT

The Gestalt approach to working with(in) groups and organizations evolved out of psychological research into perception and its applications, Gestalt therapy and organisation development. The therapeutic model was originally developed as an alternative to Freudian psychoanalysis, by Fritz Perls in Germany, South Africa and the United States (1930s to 1970s). Gestalt therapy has gained a significant international reputation, and has been further developed and applied to couples, families, teams, organizations, large business systems, social services and economic development. It is used extensively in group work and in coaching. Gestalt perception research influenced the work of Kurt Lewin, the founder of modern organisation development and first to formulate a comprehensive theory of leadership. Gestalt practice is based on awareness, of self and of the other and the context. The ability to see / diagnose what is going on with others and to use the data collected to support others to develop heightened awareness, is a distinguishing quality that makes superb leaders, managers, and consultants. A Gestalt practitioner uses the self as a primary instrument: the basis of observation, data collection, and to design and implement interventions.



TRAINERS

Rev. John Nkum



John is an Organisation and Leadership Development expert and a Development Planning and Management consultant. He has worked as an international consultant, trainer and process facilitator in Africa and Europe for more than 30 years, for clients including GIZ, DFID, World Bank, UNICEF, SNV and IBM. He was a faculty member of the Gestalt Institute of Cleveland IOSD programme, and is currently a Partner of the iGOLD Centre GestaltOD Partners registered in USA, that offers the International Organisation and Leadership Development (iGOLD) programme. He has been an executive coach to leaders in the public sector, corporate and non-profit sectors in Ghana, Nigeria, South Africa, Lesotho, Botswana, UK, Hungary, Ukraine, ECOWAS and AU Commission. John's professional experience covers diverse fields including peace and security, governance, agriculture and natural resource management, diversity, equity & inclusion, public financial management, organisation development and change management, project cycle management, monitoring, evaluation and learning, and behaviour change communication.

Chantelle Wyley



Chantelle, a Director of Baobab Consulting & Training, is a South African facilitator and coach with a background in community capacity building, training and consulting in socio-economic development. Her major focus is leadership development (training, facilitating, coaching) using Gestalt and Emotional Intelligence. She began her journey with Gestalt in 1995 and has trained with the Gestalt Institute of Cleveland, Ohio, and the Gestalt International Study Centre, Cape Cod. She is on the faculty of the International Gestalt Organization and Leadership Development Program (iGOLD) offered by the iGOLD Center (see www.gestaltod.org), and has taught coaching skills on the coaching programs of three South African business schools. She has been instrumental in (re)introducing Gestalt training in South Africa. She is also an associate of the Teleos Leadership Institute (Philadelphia, USA).

Kubeshni Govender



Kubeshni Govender is a Knowledge, Learning and Media consultant. A media and communications professional by training, Kubeshni has over twenty years of production experience and served as a public sector communicator for ten years before specializing in knowledge management and learning. She is Chairperson of the Board of Associates of Gender Links (an NGO promoting gender equality and justice) and co-founded Each One Hold One (a rights organization focused on Women to Women support). She has a M.A. in Media Studies and is an alumnus of the International Gestalt Organisational Leadership and Development Programme. As a member of the International Association of Facilitators (IAF), Kubeshni represents the Southern African Region reporting to the Africa board. Kubeshni lives in Johannesburg and loves exploring her creative side through pottery and paint.

TRAINERS

Ato Kwamina Nkum



Ato Kwamina Nkum is an Organization Development Consultant with several years' experience in facilitating organizational change towards increased effectiveness using systems thinking and other organization development methodologies. He has co-facilitated OD interventions, multi-stakeholder dialogue, strategic planning, implementation design and training workshops for clients in Ghana and internationally for the public, private and non-government organizations. He holds a practitioner certificate from the internationally recognized International Gestalt Organisation and Leadership International Gestalt Organization and Leadership Development Program (iGOLD).

Jeremy Timm



A Director of Distillery Consulting, Jeremy is fascinated by the human condition and the multifaceted ways in which humans engage with each other. He trained as a city and regional planner, cut his teeth in local government, and has spent much of his career exploring that factors that get in the way of great plans being implemented. He loves looking at issues from different attitudes and altitudes. He's worked for, and consulted to, all three spheres of the South African public service. He serves on the faculty of the International Gestalt Organization and Leadership Development Program (iGOLD) and the faculty of GIBS's Facilitation for High Performing Teams where he teaches a module on "Facilitation in Complex Systems".

Michael Henderson



Michael is a Director of Distillery Consulting. He spent the first 10 years of his career in the private sector, working in the UK and Southeast Asia before returning to South Africa to pursue an interest in psychology. He decided not to complete his clinical training, but human behaviour – and the forces that guide and shape it – remains his principal interest. He worked on organisational development projects in the private sector before joining National Treasury, where he worked for 8 years before leaving to establish Distillery. He is a certified coach and has completed a number of Gestalt related courses, including the prestigious International Gestalt Organization and Leadership Development Program (iGOLD).

WHAT PAST PARTICIPANTS HAVE SAID

"The process of Gestalt will have great application for me in my work, on the one hand, and for my personal awareness on the other"

"Far more impactful than being at a conference - I'm so surprised to say that. I'd do longer sessions in person but a 2 day course is perfect online."

"What struck me the most was getting in touch with the experiential, getting in touch with my body, my feelings, and learning to observe those in others"

"The case consultation taught me how I can be supportive of others, rather than trying to rescue them or jumping into action"

COURSE DETAILS

DATES

11 & 12 April 2024

6 & 7 June 2024

5 & 6 September 2024

PLACE

All courses will be held on Zoom

COST

Course only	\$425
Course + integration coaching ¹	\$660
Full house (course + coaching + masterclass) ²	\$860

1. Three x 1hr coaching sessions with your choice of any of the training team*

2. Any masterclass of your choice within 12 months of the intro programme

* subject to availability

REGISTRATION

<https://gestaltafrica.com/register>

Course registration closes one week before each session

Places are limited to a maximum of 20 participants

QUERIES

info@gestaltafrica.com

www.gestaltafrica.com



**GESTALT
AFRICA**